



HTW 120

2 x 1-1/2" End Suction Centrifugal Hot Water Pump

HTW 120 is a patented, unique centrifugal pump specifically designed for high temperature process manufacturing applications using hot water, ethylene glycol, propylene glycol and triethylene glycol. The Tempuflo HTW Series utilizes an isolated seal chamber, which is effectively cooled by both a cooling loop (heat exchanger) and by a fan clamp which couples the unit to the shaft of a standard NEMA C Face frame motor.

The isolator technology combined with the heat exchanger allows the seal cavity to reach a maximum and seal chamber temperature of 170°F (77°C) while the process temperature is at 400°F (204°C). This lower seal temperature greatly increases seal life, which means less down time for the end user.

Discharge port location can be provided as either Horizontal or Vertical position.

SPECIFICATIONS:

Suction and Discharge	2" x 1-1/2" NPT or 150# flat flange
Materials of Construction	Ductile iron
Flow	Up to 200 GPM (45.4 m ³ /h)
Head Feet	Up to 135' (38.7 m)
Impeller	5.06" (128.52 mm) steel, enclosed
Motor	Up to 5 HP (3.67kW)
Drive Options	Close coupled 145TC Close coupled 184C
Seal	Carbon / silicon carbide / Viton
Temperature	650°F (343°C) max

Application:

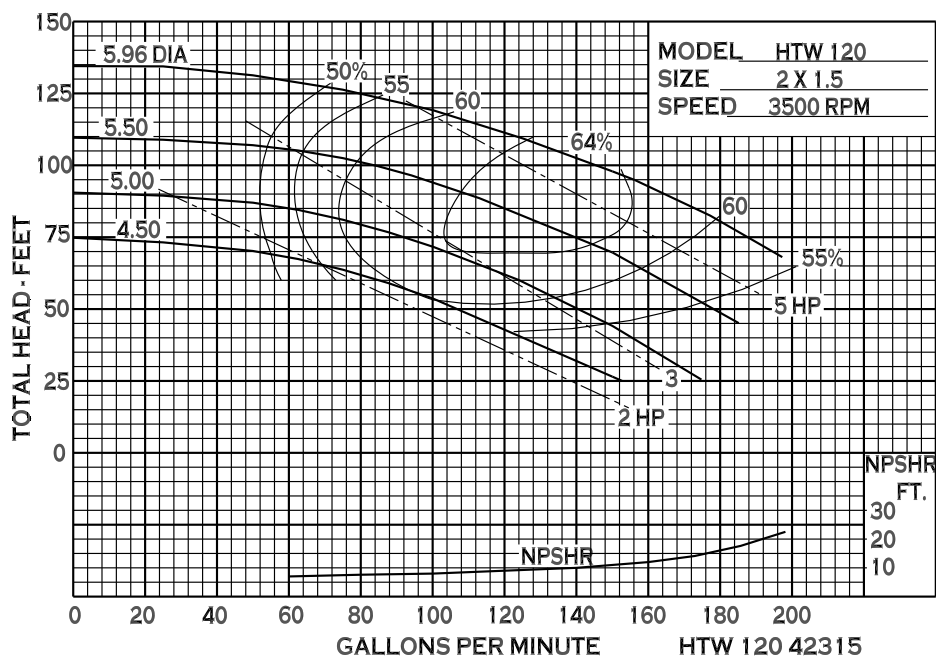
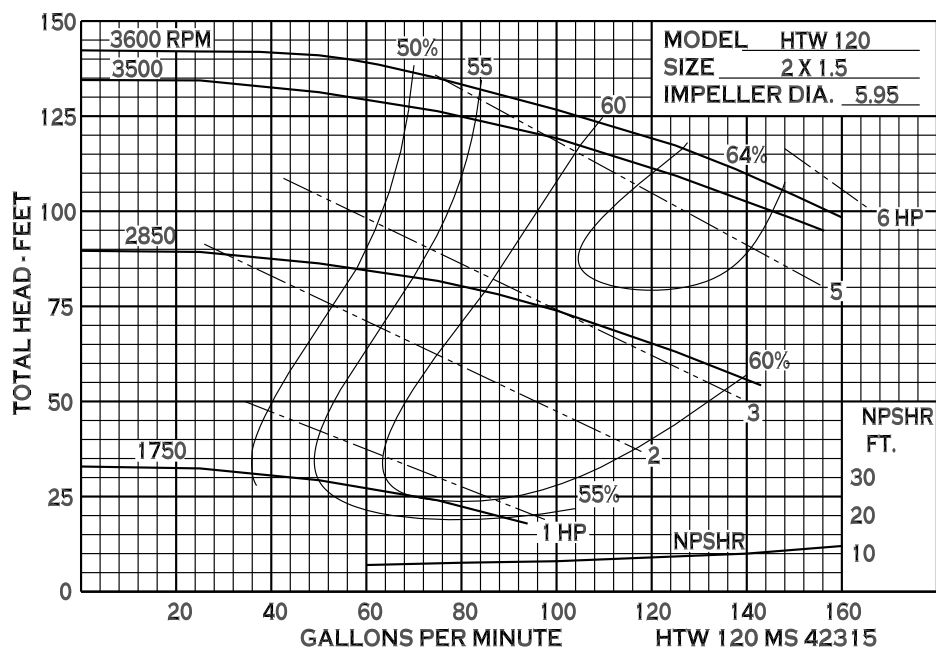
- Industrial
- OEM



An Ingersoll Rand Business

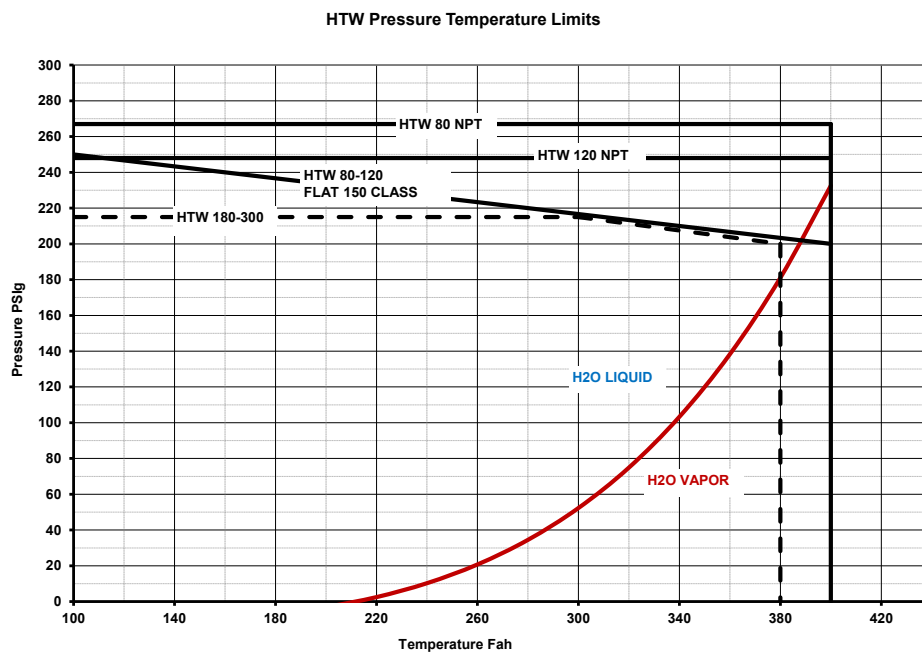
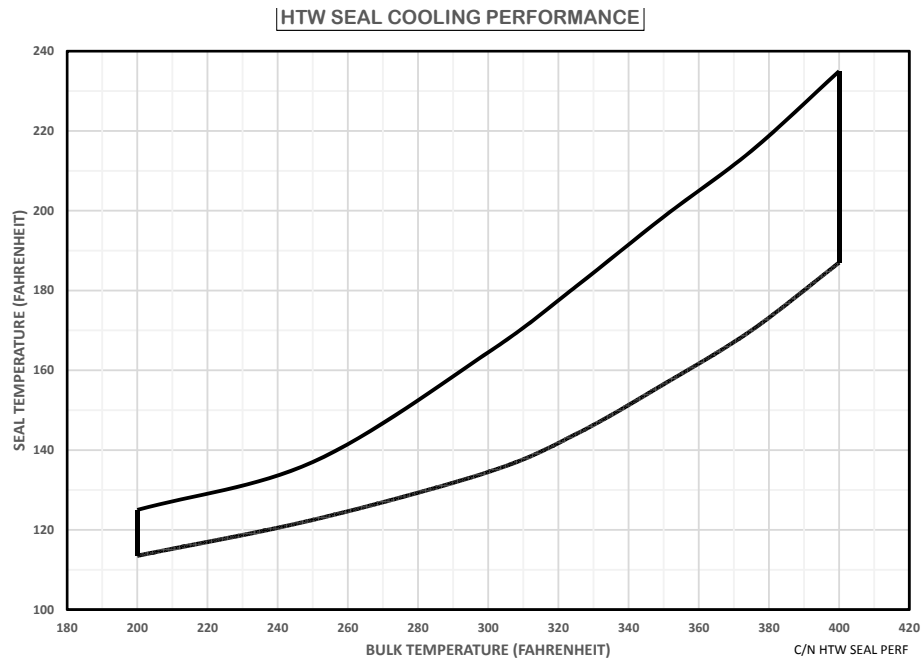
HTW 120

PERFORMANCE CURVES



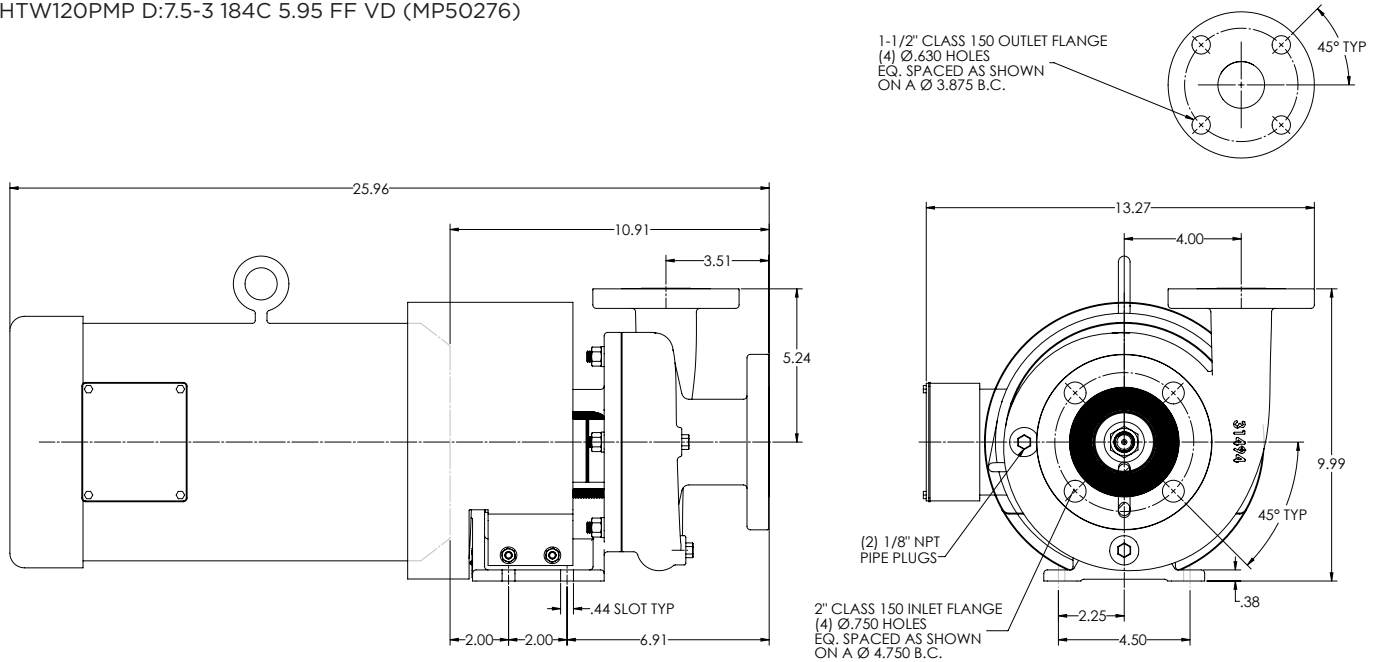
12500 South Pulaski Road
Alsip, IL 60803, USA
Phone (800) 563-8006

PERFORMANCE CURVES

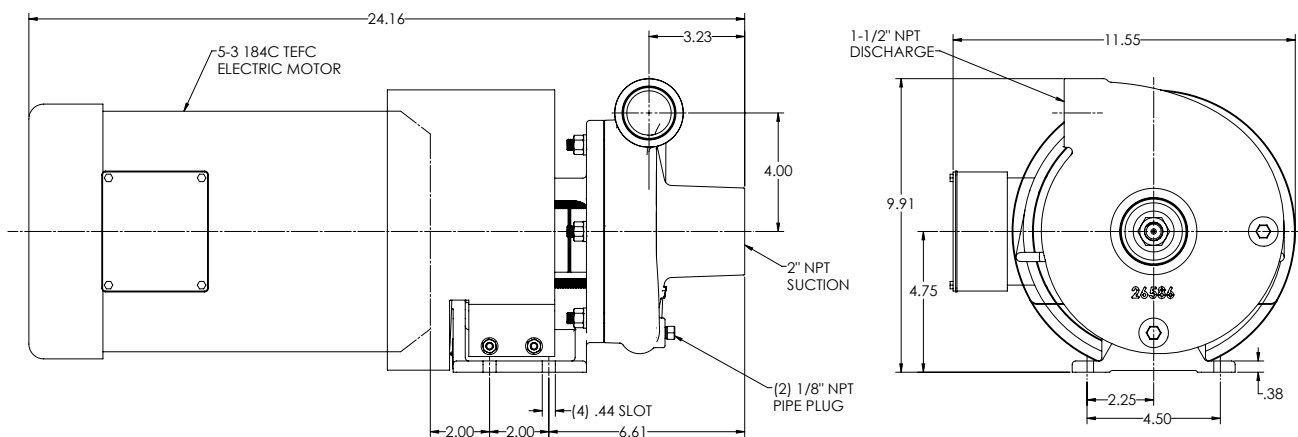


DIMENSIONS

HTW120PMP D:7.5-3 184C 5.95 FF VD (MP50276)



HTW120PMP D:5-3 184C 5.96 HD (MP50696)



* For complete parts lists and troubleshooting guidance, please refer to the MP Pumps Installation Operation & Maintenance (IOM) Manual.

